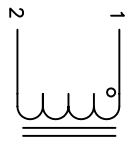


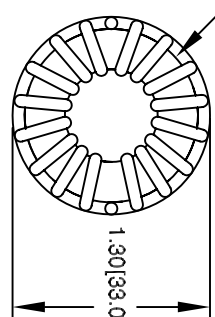
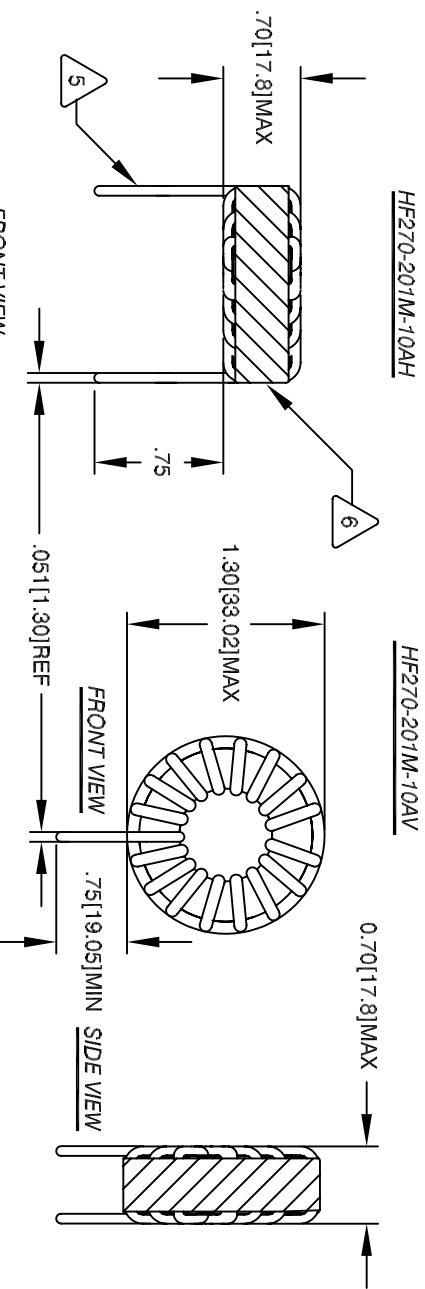
The information contained in this drawing is the sole property of CWS Coil Winding Specialist. Any reproduction in part or whole without written permission of CWS Coil Winding Specialist is prohibited.

REVISION HISTORY

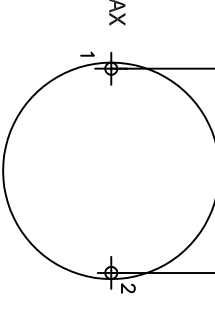
REV	ECN	DESCRIPTION	BY	DATE	CHK	DATE
B		PRODUCTION RELEASE	TKK	2/09/04	JLJU	2/9/04
C		REVISED DIMENSIONAL TOLERANCES & DCR	TKK	2/09/04	JLJU	2/9/04



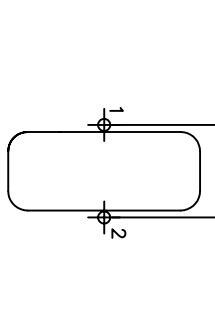
SCHEMATIC



BOTTOM VIEW



MOUNTING HOLES PATTERN



MOUNTING HOLES PATTERN

- 7 BUILT TO ROHS COMPLIANCE LEAD FREE
- 6 USING A PERMANENT MARKING METHOD MARK PART NUMBER AND REVISION. IF APPLICABLE IF NEEDED, WRAP INDUCTOR WITH GLASS TAPE
- 5 TO THE CORE MUST REST FLAT ON PCB. LEADS MUST BE TANGENT FLUSH WITH THE COIL EDGE, AS SHOWN (I.E. COIL REMOVE INSULATION AND TIN LEADS 0.75 INCH
- 4 WIND COILS EVENLY SPACED AROUND THE CORE CONSTRUCTION:
 H-POT TEST FOR WINDING TO CORE ISOLATION = 500VDC MIN
 CURRENT RATING : 10 AMPS, 40 °C TEMP. RISE, NO AIR FLOW
 DCR = 38 MILLI-OHMS MAX.
 DC BIASED 10 AMPS, INDUCTANCE = 95 UH
 DC BIASED 5.5 AMPS, INDUCTANCE = 160 UH
 INDUCTANCE = 200 UH ±10% @ LOW DC BIAS, 1 KHZ, 250mV SPECIFICATIONS:
- 3 WIRE: UL RECOGNIZED 180°C RATED MAGNET WIRE OR HIGHER CWS BYTEMARK OR OTHER APPROVED PART
 CORE: COATED HIGH FLUX TOROIDAL CORE
- 2 RATING CLASS B (130°C MIN.) REQUIRED
 MATERIAL: UL RECOGNIZED 94V-0 FOR FLAMMABILITY

NOTES: TOROIDAL POWER CHOKE. ALL DIMENSIONS IN INCHES

UNLESS OTHERWISE SPECIFIED	
DIMENSIONING AND TOLERANCE PER ANSI Y14.5M AND [DIMETERS]	DRMM
TOLERANCE INCHES: XXX=±.005 XX=±.015 XX=±.127 XX=±.38	CHXD
ANGLE PROJECTION	APPR
DO NOT SCALE DRAWING	

CODE IDENT	MFG. P/N	DESCRIPTION	ITEM NO.
PARTS LIST			
AUTOCAD SOLIDWORKS		CWS Coil Winding Specialist	
353 W Grove Ave			
Orange, CA 92865			
DATE	DATE	DATE	DATE
2/8/04	2/9/04	2/9/04	2/9/04
ENGR. KSUM	APPR. JLJU	ENGR. KSUM	APPR. JLJU
3/5/04	3/6/04	3/5/04	3/6/04
TITLE:		SIZE DWG. NO.	
Toroidal Power Choke		HF270-201M-10A	
200 UH, 10.0 Amp		SCALE	
2=1		SHEET 1 OF 1	